

GTSOne- ERP - Brochure



**Global Technology Systems
CO.**

Amman- Jordan

GTS - Global Technology Systems

GTS – Global Technology System Company Was Established In 2016 As Jordanian Information Technology Companies Operating In Mena Region By Implementation Of The Best Technology Of Software,, GTS has established partnerships with international companies such as sap, Microsoft, .IBM and other international companies

Vision

To become the leading and pioneering company in providing financial and administrative advisory services and integrated technology, keeping pace with technological progress in Mena Region.

Mission

Providing advanced financial, administrative and technological advisory services by providing integrated automated programs and systems, whether administrative, financial or technological, so as to give added value and high satisfaction to the company's dealers, by adopting the best technology and marketing methods available so that an integrated relationship is built with customers and partners and progress The company operates within a qualified, trained and developing human cadre.

Values

- Honesty and trust.
- Speed And Accuracy Of Completion.
- Integrity And Transparency.
- Creativity And Skill At Work.
- Respecting Others.
- Sharing Knowledge.

Quality standards

The Technical Quality Of The Products And Services Provided By The Company Is Consistent With Recognized Technical And Industrial Standards, International Applications And Services Provided, And Within The Best International Standards And Standards, And In Line With Local Requirements In Particular.

Confidentiality

We deal with all the data and documents that the company obtains during its work within the highest levels of confidentiality and within the strictest restrictions on disclosure and trading.

GTS ONE-ERP

GTS ONE-ERP Components:



Finance & Accounting

Detail Screens

Exchange Rate Differences

Internal & External Reconciliation

Incoming & Outgoing

Payment & Deposit

Cancellation

Payment Methods (Cheque, Bank Transfer, Credit Card, Cash))

Dunning Terms & Interest Calculation

Post Dated Cheques

General Ledger

Accounts

Accounts

Journal Entries / Journal Vouchers

Transaction

Recurring Postings

Dual Currency

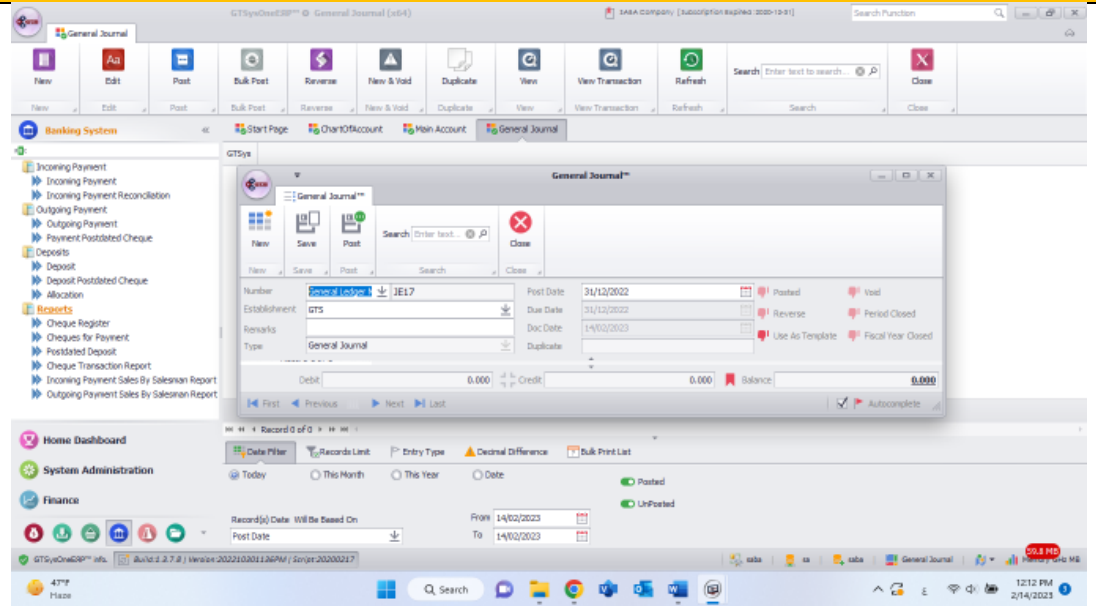
The screenshot displays two screenshots of the GTSOneERP software interface. The top screenshot shows the 'ChartOfAccount' screen for 'SABA Company'. It features a navigation menu with options like Assets, liabilities, Capital, Revenue, COGS, Expenses, View All, Refresh, and Close. The main area shows a tree view of the Chart of Account structure with columns for Level, Level Seq, Drawer, and Is Control. Below this, there are 'G/L Account' and 'G/L Account Properties' sections with various dropdown menus and checkboxes.

The bottom screenshot shows the 'Sales Blanket Agreement' screen. It has a similar navigation menu with options like New, Edit, Void, View, Diagram, Refresh, Search, and Close. The main area contains a table with columns: GTSys id, Numbering, Active, Description, Customer t..., Code, Customer, Email, Mobile, Start Date, End Date, Termination..., and Sign Date. Below the table, there are filters for Date Filter and Records Limit, and a section for Record(s) Date with options for Today, This Month, and This Year.

Banks and Cash Management (Banking system)

Detail Screens

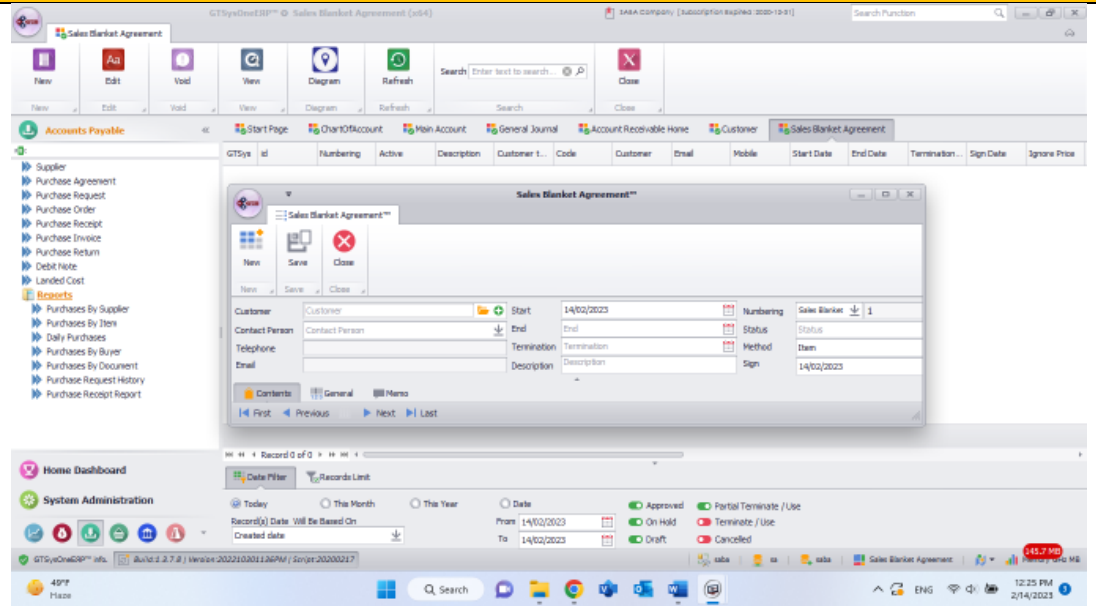
- Cheque automatic collection
- Outgoing Cheque automatic payments
- Postdated Check collection
- Cheque Printing
- Cheque and cash registration and bank deposit
- Cheque cancelation
- Deposit Documnets
- Cheque Giro



Purchasing

Detail Screens

- Landed Costs
- Debit Note
- Purchase agreements
- AP Invoice
- Supplier managements
- Purchase Request
- Purchase Order
- Goods Receipt PO
- Goods Return
- AP Down Payment Invoice



Sales	
Detail Screens	
AR Invoice	
AR Invoice + Payment	
AR Credit Note	
Blanket Agreements	
Customer managements	
Sales Quotation	
Sales Order	
Delivery	
Return	
AR Down Payment Invoice.	

Inventory Management

Detail Screens

Bills of material (BOM) Management

Item Accessories and alternatives

Item Pricing

Item costing

Item attachments

price level

Item Dimension Origin- Color- Size ...etc

Batch and Lot management: Lot ad expiry dates alerts and QC numbering

Inventory Transfer: Transfer management quantity and delivery

Packing management: Unit of measurement and packing management

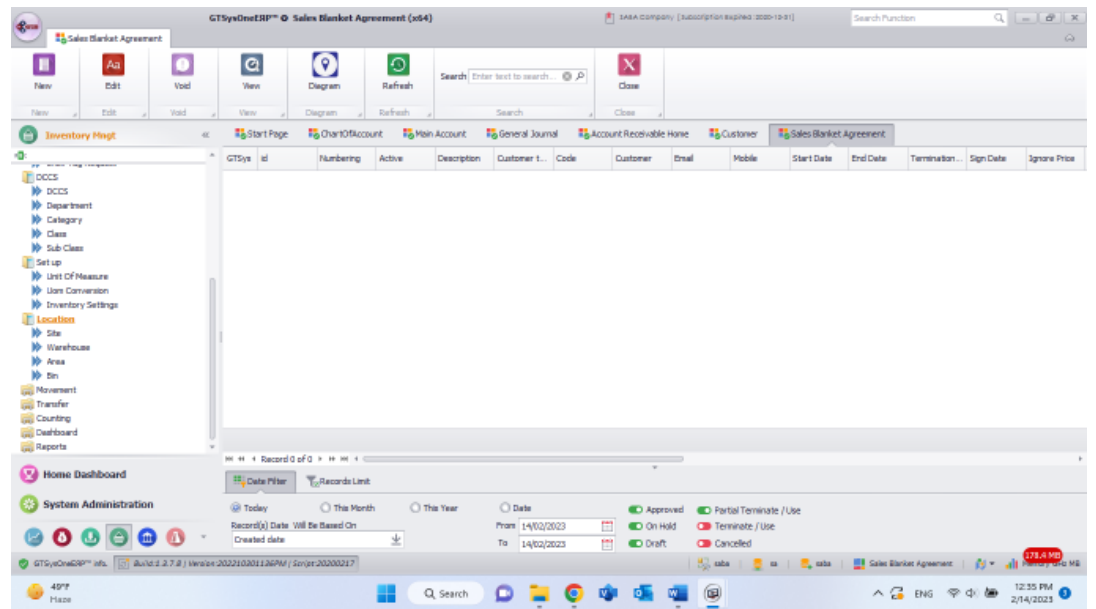
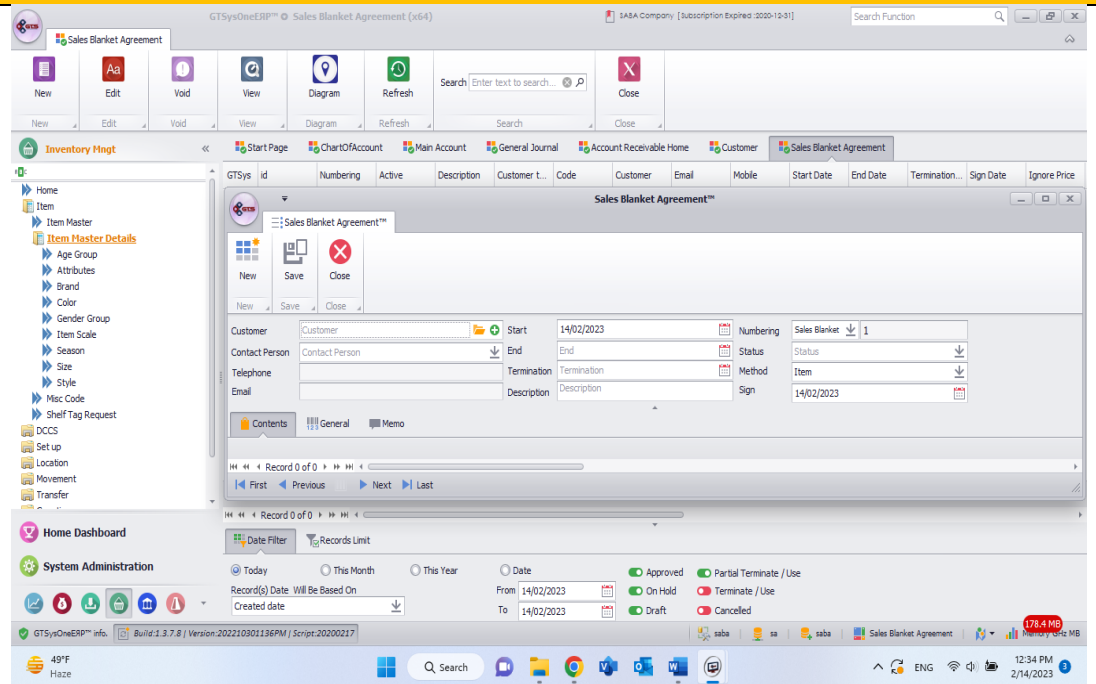
Item accessories

Item audit

Inventory aging

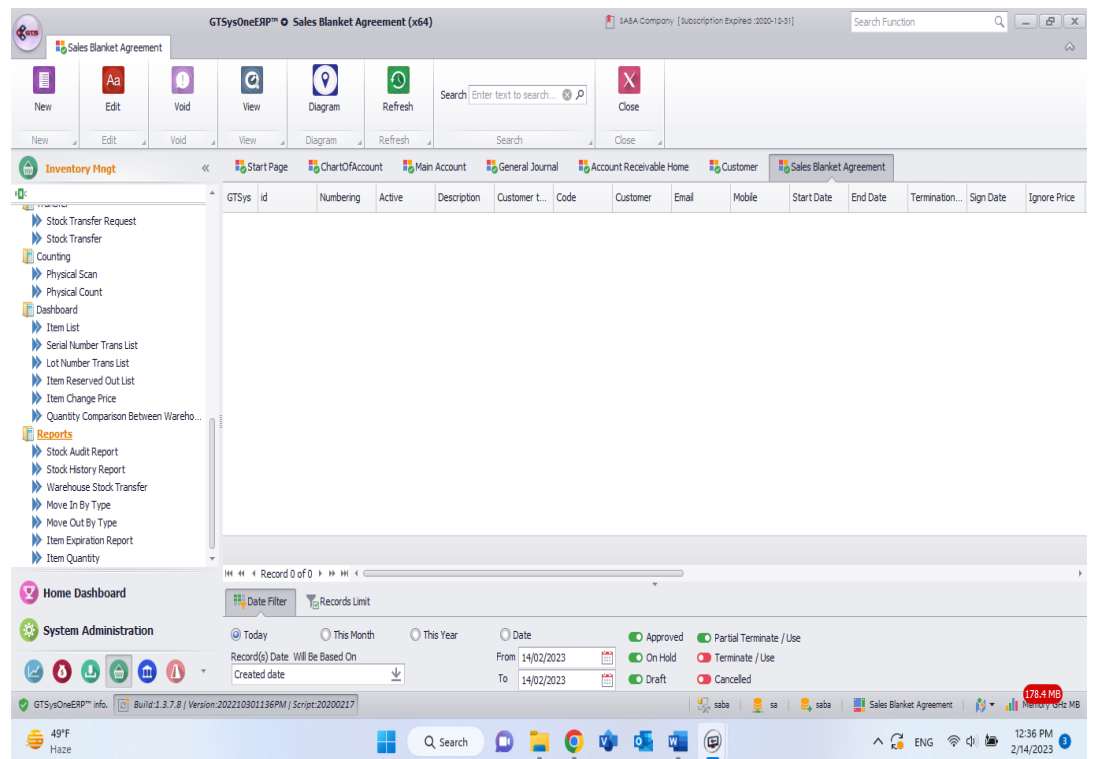
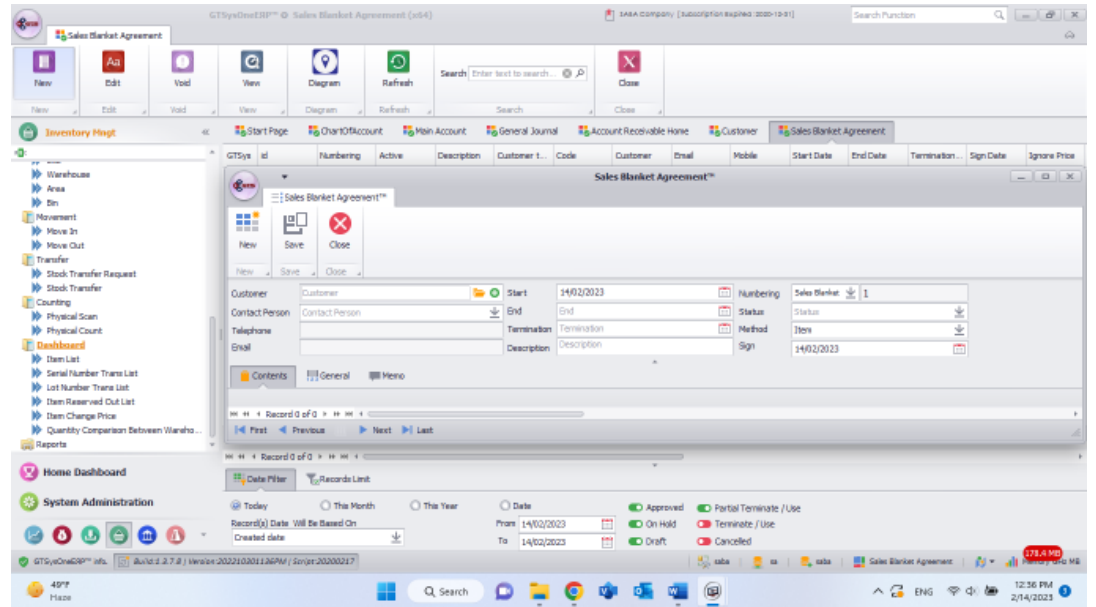
Item master data

Storage dimensions



UOM conversions
Warehouse locations
Pick & shipments
Serial and batch number control
Item Master Data: Item master data, properties, sales, purchasing, accounting.
Item Category: Item Department, category, Class, Sub Class DCCS
Inventory Location: Location, Area , Bin
Inventory Costing: Average, FIFO, Standard
Alternative Items and list of barcodes
Serial Number and Batch transaction audit
Item History
Real time / Offline Physical Counting

1



Production	
Detail Screens	
Bill Of material Packing and Production	
Production order release	
Receive from production order	
Production order planning	
Issue For production order	
Production Costing	
WIP reports	

Retail POS

Detail Screens

Customizable Alerts

Domination

Restaurant Management and tables

Reports

Customizable Point of sales

Drawer Management

Promotions

Gift certificate

CRM - Customer Service Management

Detail Screens

Visit Type

Evaluation Questioner

Contract and Contract Scheduling

Job Order and alerts

Reports

Contact Management

Leads

Activities

Target

Sales and Quotation

Personnel Activates

Response Time

Open Ticket

Visit Sheet

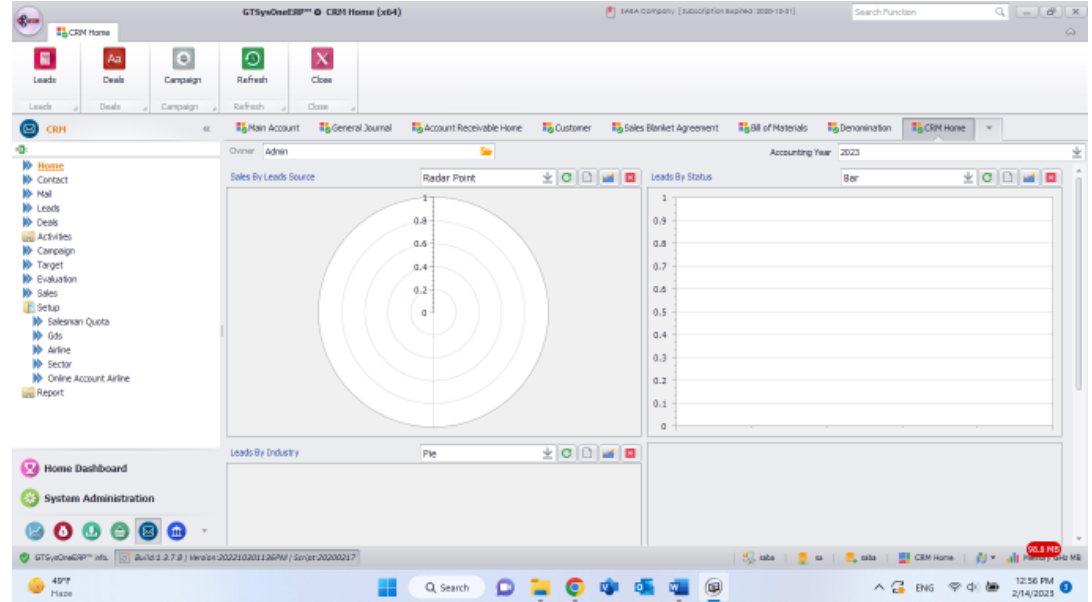
Reports and Dashboard

Mail, and Mail Merge

Deals

Campaigning

Evaluation



The screenshot shows the 'Sales Representative' screen. It features a data table with the following columns: #, Row/Count, Date / Time / Agency / Location / Key Person, Airline, Sales Type, Objectives, Feedback, Last Visit, and Material Handled. The table is currently empty. Above the table are input fields for 'Salesman from', 'Salesman to', 'Date From', and 'Date To', with a 'Date Based' dropdown and a 'Date Create' field. The interface includes a navigation menu on the left and a system status bar at the bottom.

GTS ONE-ERP Features

General Features

Business Workflow	Outlook Integration
Electronic Data Interchange	Mobility Integration
Electronic File Manager	Devexpress Reports Engine
Dashboards	UI settings
Authorization & Approval Cycles ¹	Custom fields, tables and form.
Permission Groups	Microsoft office integration
Alerts & Internal Messages	

Administration Setting

Company Setting	Establishments Setting
Station Setting	Monetary Setting, credit cards, cash discount
Home Bank Setting	Financial Determination and Accounts Linking for sub ledgers
Tax Setting, TAX area	Payment methods, payments Blocks
Inventory Delivery Type, Price Levels	Utilities
Approvals Procedures, Approval Stages	Fields rules
Data Import template	Customization reports
Dashboard Designer	Report designer
Foreign language setting and translation	Numbering setting
Rounding setting	System update setting
Breaking news	Server Explorer

Synchronization





Branches Connections and setting	Synch report and event management
Tables to be Upload or download	Synch evaluation and monitoring
Synch Service and time management	

Dashboard


Sales analysis	Sales KPI
----------------	-----------

Cost analysis and performance	Sales cycle length
Sales by sales man	Lead to deal ratio
Maintenance open job orders and status	Lead to close ratio
Inventory aging	Lead by sales man
Deal by stage	Lose deal
Customizable dashboard	


List of customers

Seq	Company	Location	Company
1	AlWatania Information Systems (WiSys)	Riyadh, Saudi Arabia	
2	Hisham alqaysee and sons company	Amman, Jordan	
3	Number one for fruit and vegetables	Amman, Jordan	
4	TEXON For trading	Amman, Jordan	

5	Dada Group	Amman, Jordan	
6	Al Nabil For Food Products	Amman, Jordan	
7	Al- Raihan Herbs and Coffee Retailer and Wholesaler	Amman, Jordan	
8	Al Ameen Coffee Retailer	Amman, Jordan	
9	The National Office Systems	Amman, Jordan	
10	RIVAGE Natural Dead Sea Minerals	Amman, Jordan	
11	AVIT- Islamic fashion	Amman, Jordan	
12	PRIME- Fresh Food	Amman, Jordan	

13	Ministry of justice– KSA	Riyadh, Saudi Arabia	
----	---------------------------------	----------------------	---

List of Contact

<p>GTS – Global Technology Systems</p> 	
Main office	Mutta Complex, Office No. 309– Aisha Altaymoryah Street, Almokabaleen, Amman, Jordan
Email	info@gtsys.com.jo
web	www.gtsys.com.jo
Mobil	Eng. Mustafa Shahteet +962-790805856
Mobil	Anas Alqazaqi, Business development 962792830622+
Mobil	Imad abdufatah, financial manager 962785959999+